

The SIDNEY BECHET Society presents

New York's Hottest Traditional Jazz Shows return to The Kaye Playhouse at Hunter College

2012 Season

Hot Jazz!



Wycliffe Gordon



Anat Cohen



Aaron Diehl

MONDAY, APRIL 16

Wycliffe Gordon's "Hello Pops!" Armstrong meets Bechet as multi-talented Wycliffe Gordon (on trumpet, trombone, sousaphone and vocals) is joined by Anat Cohen (clarinet), Aaron Diehl (piano), Bria Skonberg (trumpet), Marion Felder (drums) and Corcoran Holt (bass).

MONDAY, MAY 21

Young jazz traditionalists, Dave Bennett & Bria Skonberg co-lead a roster of jazz veterans, Derek Smith (piano), Bucky Pizzarelli (guitar), Jackie Williams (drums) and Frank Tate (bass).

WEDNESDAY, OCTOBER 10

Grammy winner Vince Giordano leads a powerhouse band, featuring vocalist Catherine Russell. With special guest, jazz legend George Wein. Randy Sandke (trumpet), John Allred (trombone), Mark Lopeman (reeds), Ken Salvo (guitar/banjo), Mark Shane (piano), Arnie Kinsella (drums).

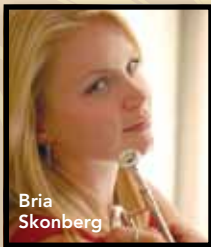
MONDAY, NOVEMBER 5

Jon-Erik Kellso brings you "Sidney Bechet & the New Orleans Trumpet Greats" featuring clarinetist Evan Christopher. Ehud Asherie (piano), Matt Munisteri (guitar), Pat O'Leary (bass), Marion Felder (drums).

All shows at 7:15 pm



Dave Bennett



Bria Skonberg



Derek Smith



Bucky Pizzarelli



Vince Giordano



Catherine Russell



George Wein



Jon-Erik Kellso



Evan Christopher

the kaye
PLAYHOUSE AT HUNTER COLLEGE

68th Street between Park & Lexington Avenues
New York, NY
Box Office (212) 772-4448

Pre-season mail order special — save \$20.
4-show season package only \$120
(tickets \$35 each at box office) Use coupon below.

www.sidneybechet.org

SIDNEY BECHET SOCIETY 2012 Advance Subscription Order Form

Seating is by general admission. Tickets will be mailed in March, 2012.
(Please include self addressed stamped envelope.)

Make check or M.O. payable to and mail to:

The Sidney Bechet Society, 20 Joy Drive, New Hyde Park, NY 11040

4-show season package _____ x \$120 = _____

Donation = _____

TOTAL ENCLOSED = _____

Name _____

Address: _____

Tel: _____

e-mail: _____

(please include e-mail address for confirmation of your order)